



54 Gaston Way

Shepperton, TW17 8EX

Asking price £385,000



This two bedroom bungalow is located within walking distance of Shepperton High Street, train station and wonderful walks along the river Ash.

The property offers a fantastic layout due an extension. Accommodation now consists of an entrance hall and reception room, that has ample space for dining area and living area. The kitchen has been extended, as have both bedrooms and the four-piece bathroom. Both bedrooms are doubles, with bedroom 1 benefitting from wardrobes.

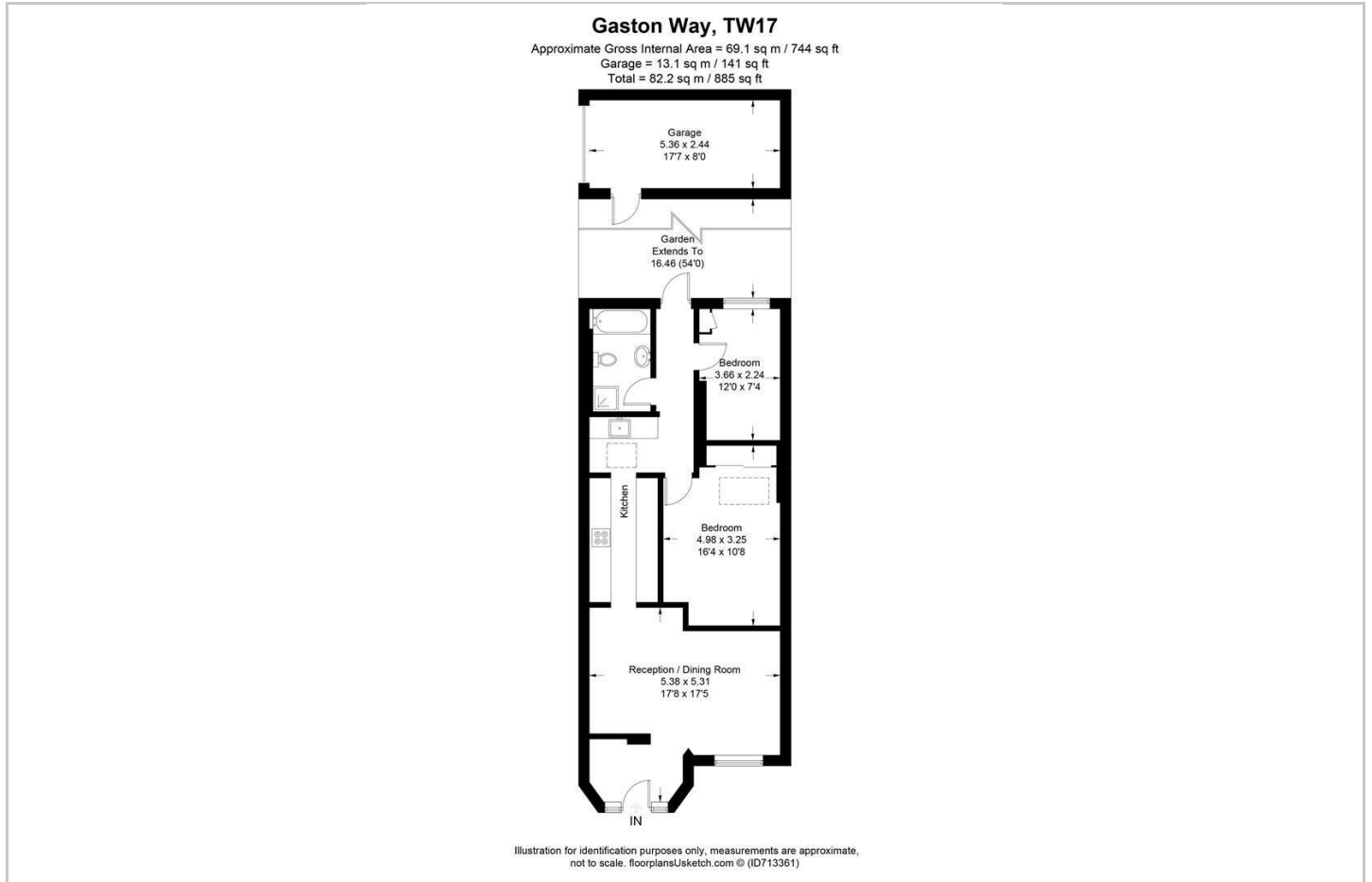
Externally there is an enclosed garden to rear with a garage at the bottom of the garden. The garage can be accessed from the rear.

This is a great Freehold property within walking distance of shops, bus routes, train station and reputable schools.





Floor Plan



Area Map



Viewing

Please contact our Shepperton - Sales Office on 01932232927 if you wish to arrange a viewing appointment for this property or require further information.

These particulars, whilst believed to be accurate are set out as a general outline only for guidance and do not constitute any part of an offer or contract. Intending purchasers should not rely on them as statements of representation of fact, but must satisfy themselves by inspection or otherwise as to their accuracy. No person in this firm's employment has the authority to make or give any representation or warranty in respect of the property.

Energy Efficiency Graph

